

The Coronary that Spiraled out of Control

Daniel I. Simon, MD, FACC, FAHA, FSCAI

President, Harrington Heart & Vascular Institute

Chief, Division of Cardiovascular Medicine

University Hospitals Case Medical Center

Herman K Hellerstein Chair and Professor

Case Western Reserve University School of Medicine

Disclosure Statement of Financial Interest

Within the past 12 months, I or my spouse/partner have had a financial interest/arrangement or affiliation with the organization(s) listed below.

Affiliation/Financial Relationship

Company

Grant/Research Support

Medtronic Foundation

Consulting Fees/Honoraria

Medtronic

Major Stock Shareholder/Equity

Royalty Income

Ownership/Founder

Sujana Biotech

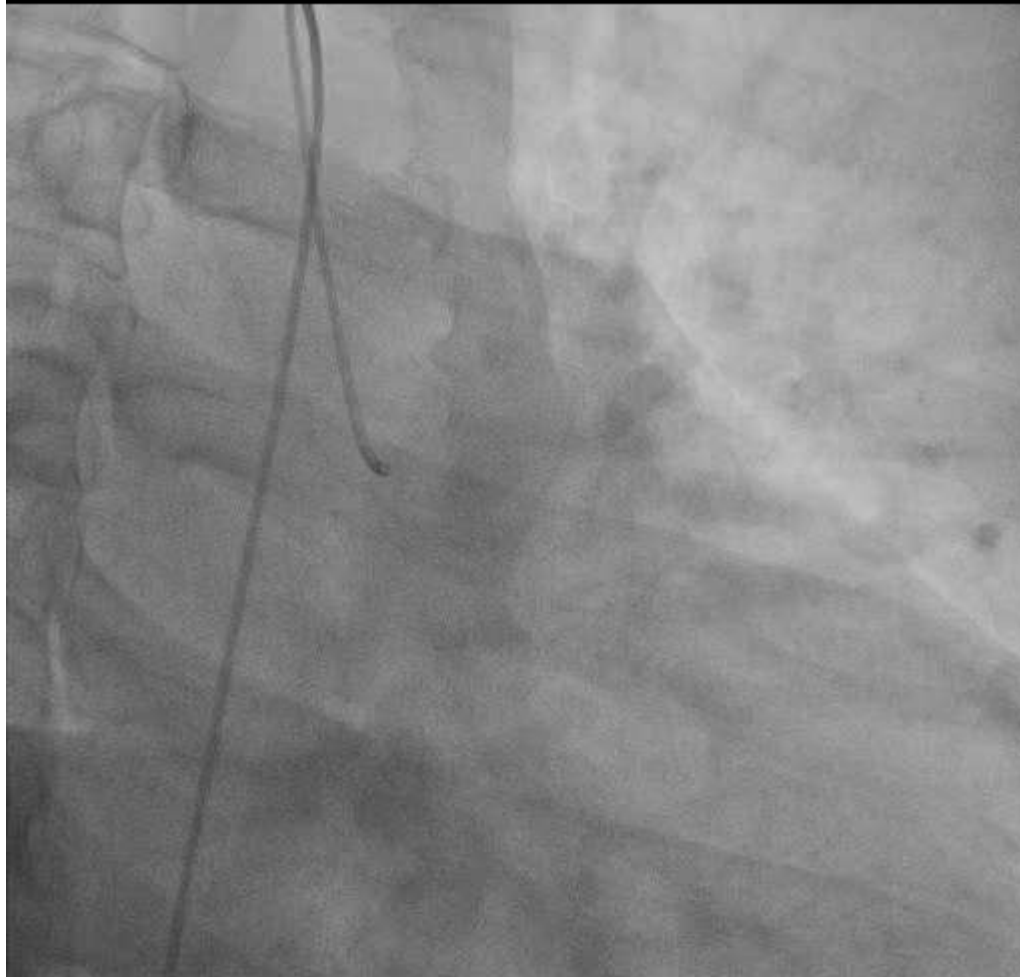
Intellectual Property Rights

Other Financial Benefit

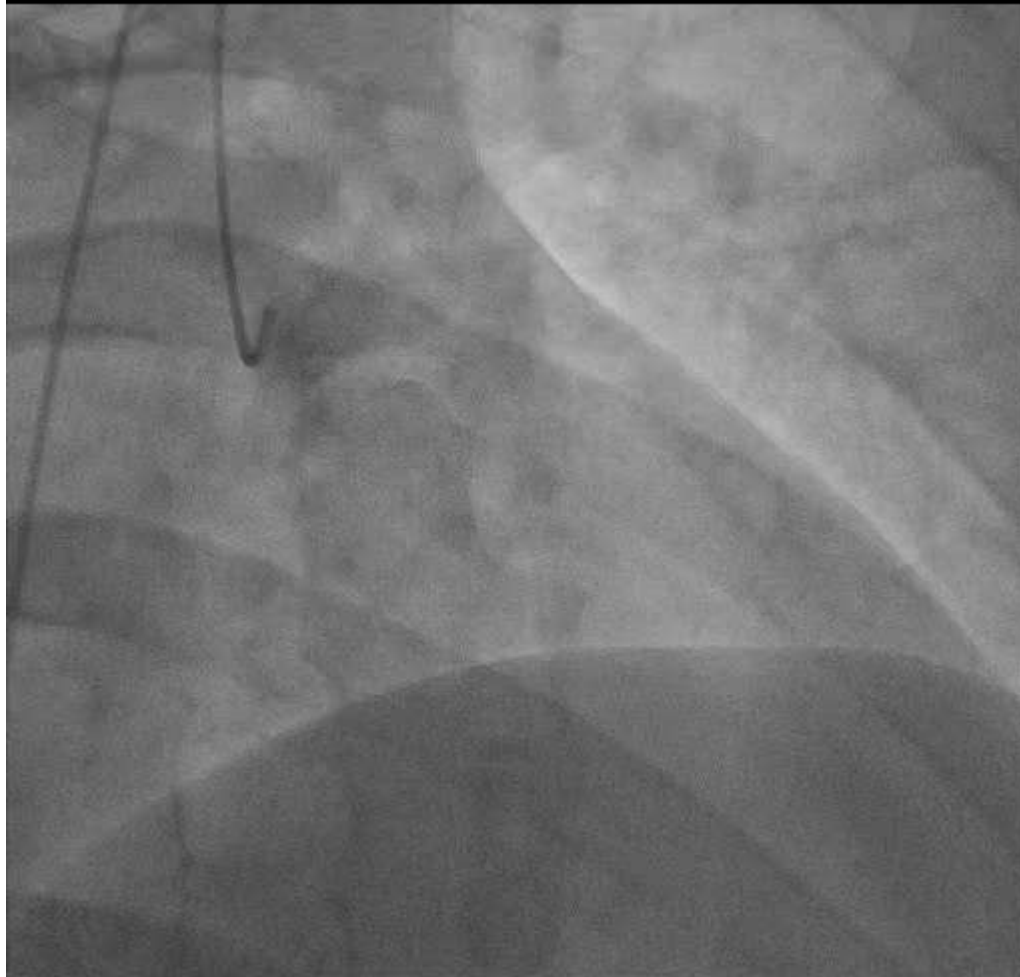
Case 1

- Inferior STEMI

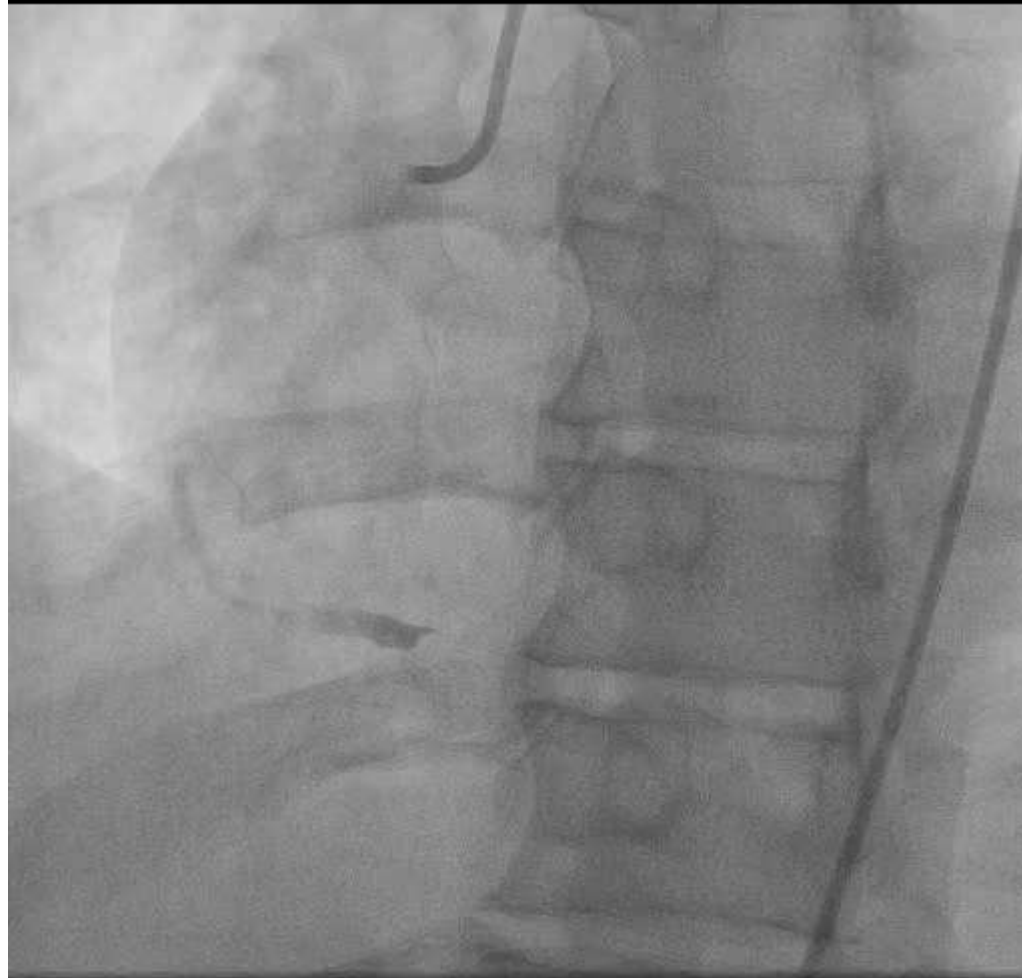
Lossy compression - not intended for diagnosis



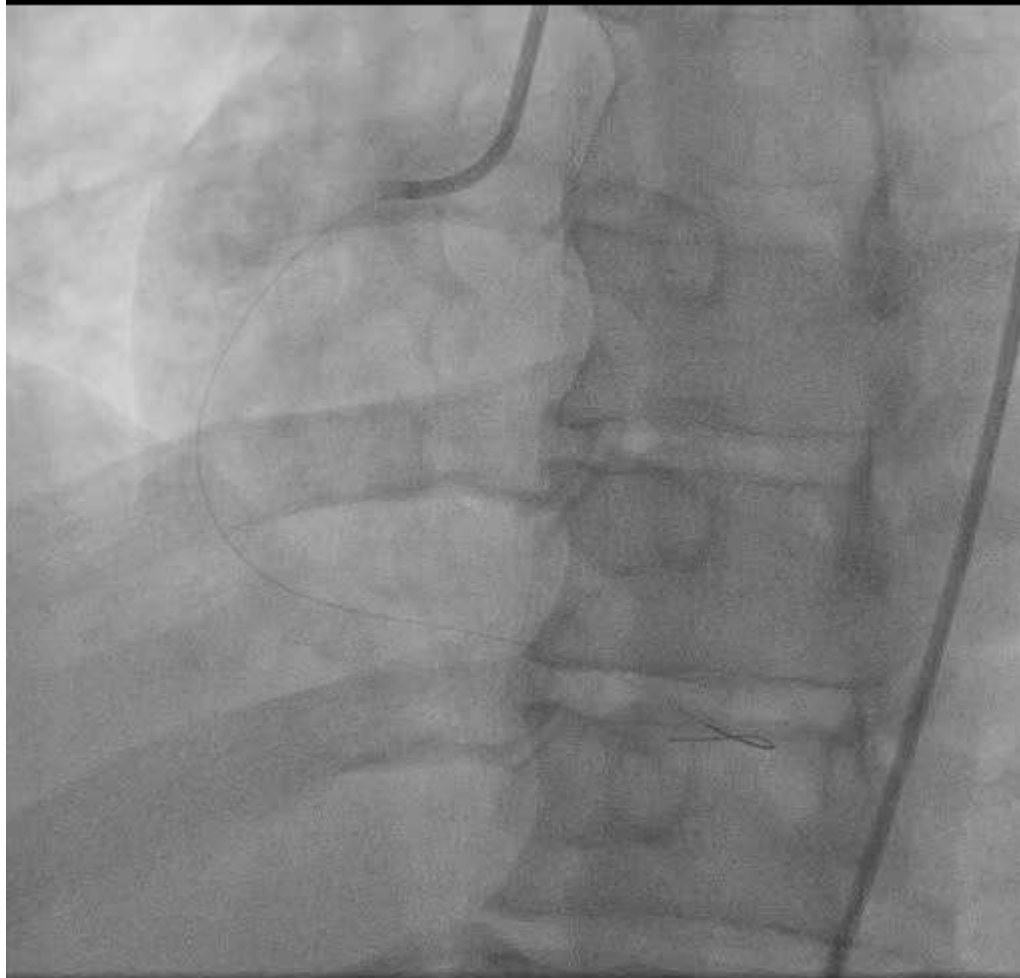
Lossy compression - not intended for diagnosis



Lossy compression - not intended for diagnosis



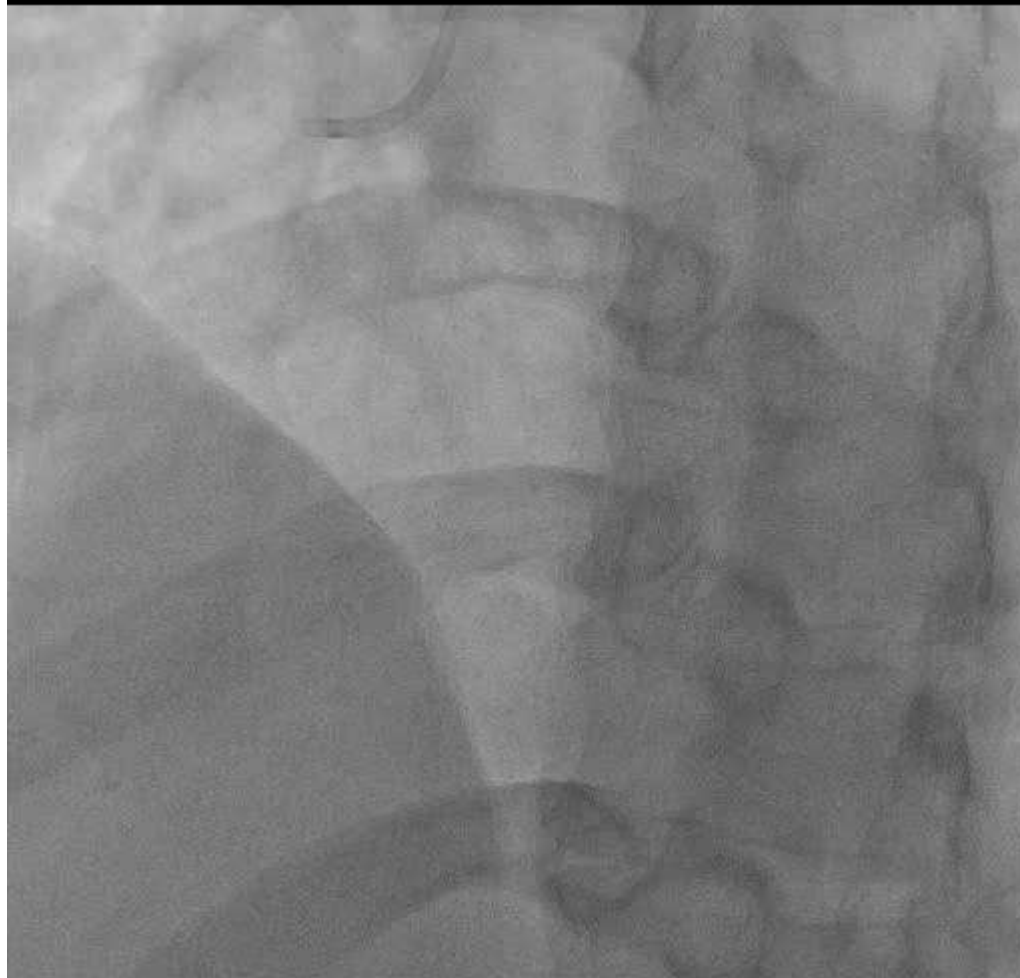
Lossy compression - not intended for diagnosis



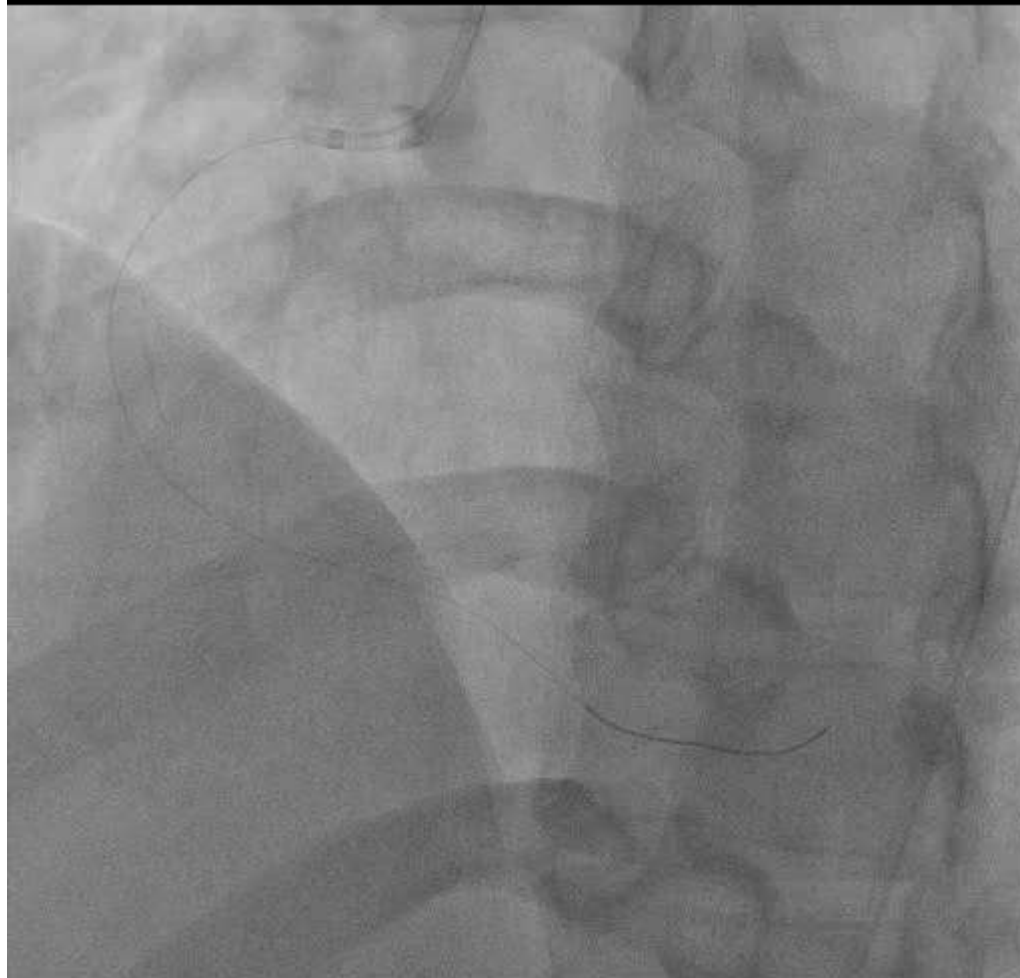
Attending-Fellow conversation...

- Fellow: “Guide pressure is dampened. I can’t draw back any blood.”
- Attending: “That’s strange. Guide pressure was OK on post-thrombectomy angiogram, wasn’t it? I wonder if the thrombectomized clot is still in the guide. Let’s withdraw everything as a unit—guide and wire.”

Lossy compression - not intended for diagnosis



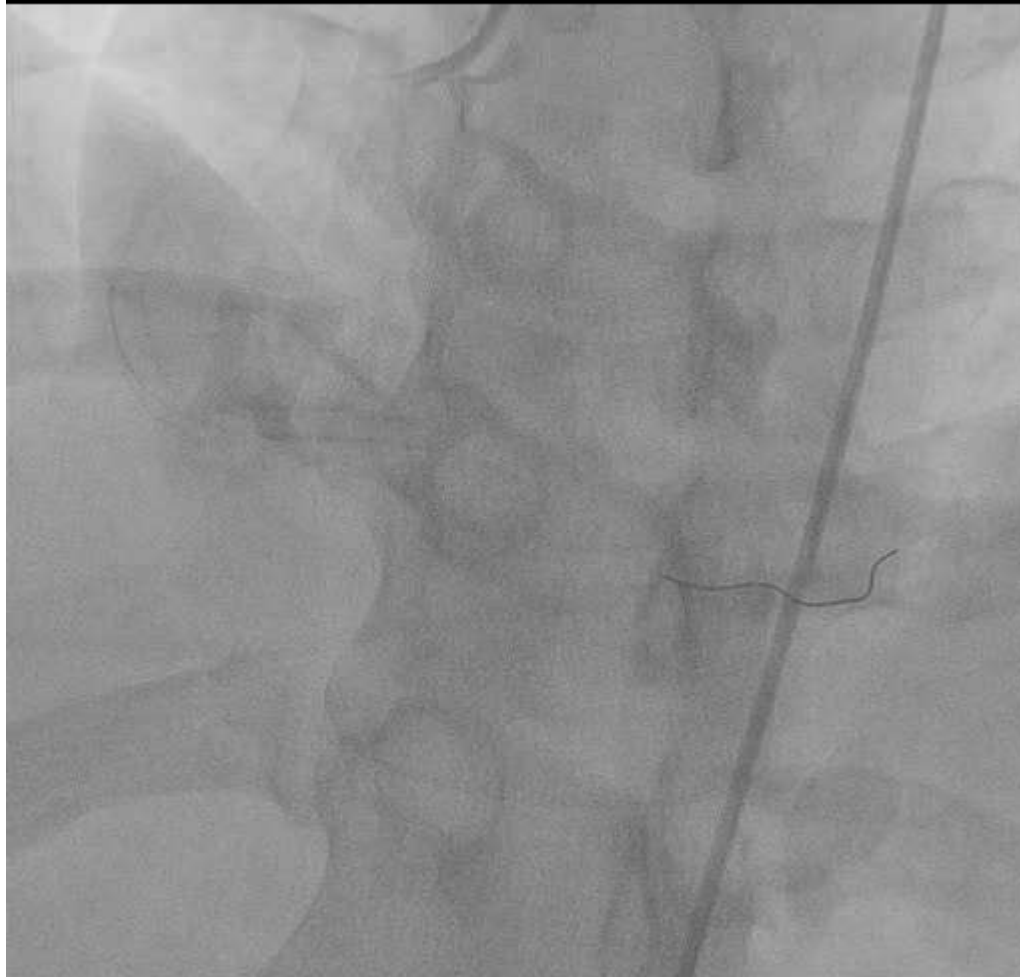
Lossy compression - not intended for diagnosis



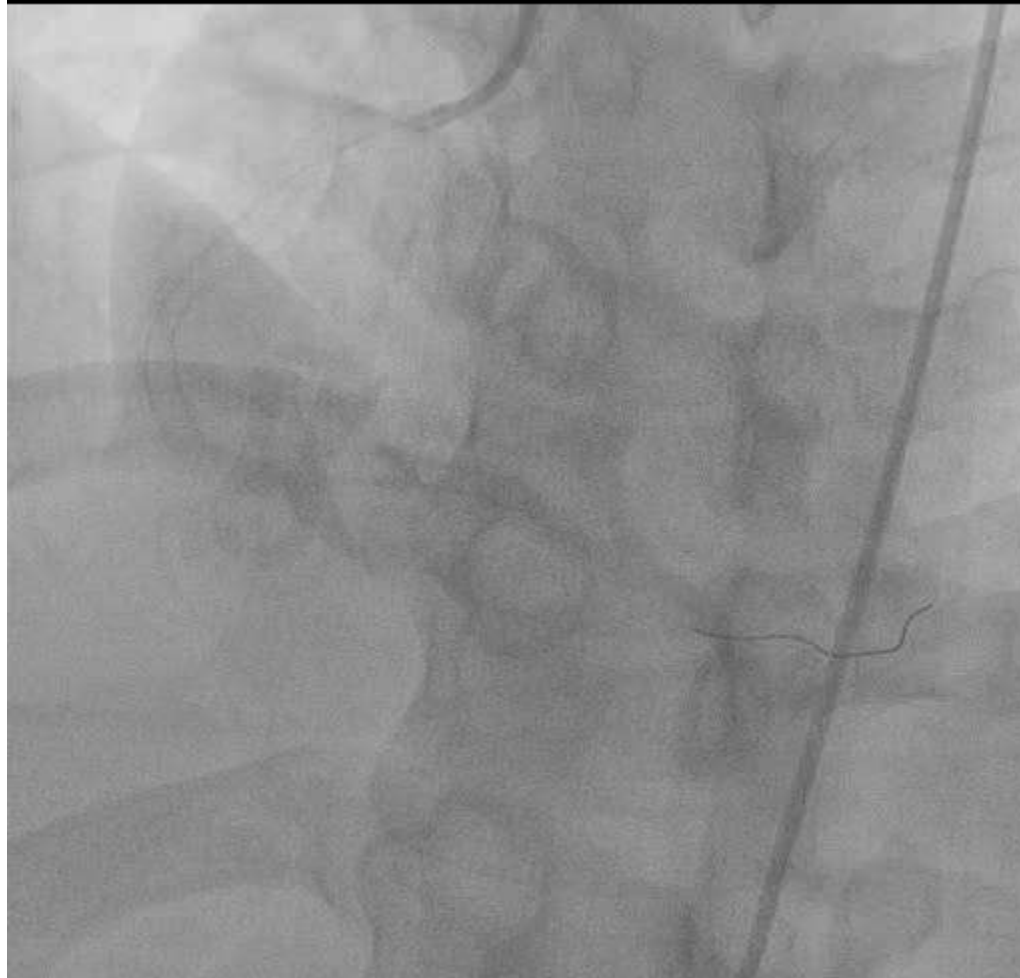
Lossy compression - not intended for diagnosis



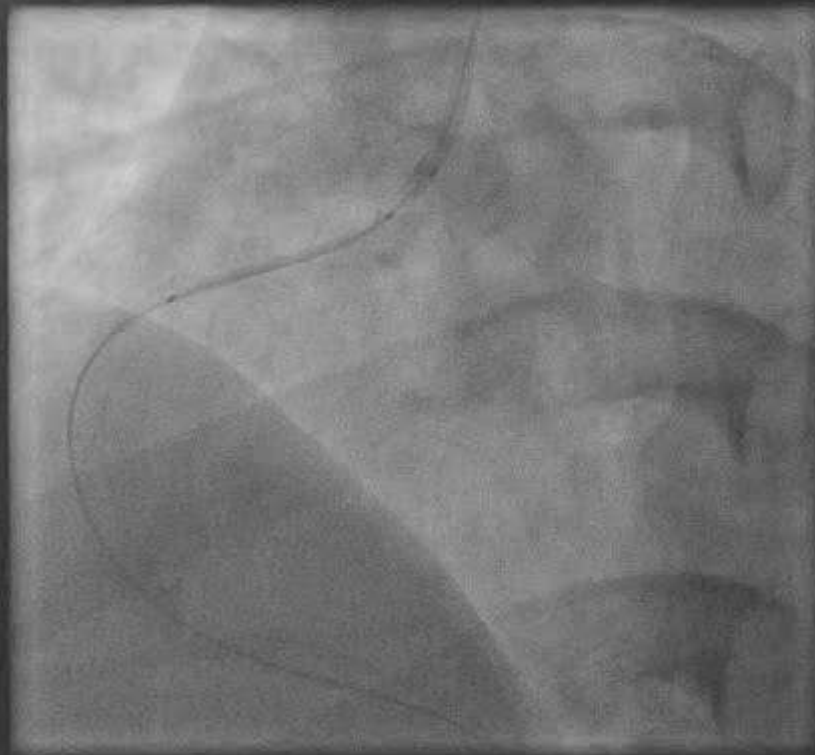
Lossy compression - not intended for diagnosis



Lossy compression - not intended for diagnosis



Lossy compression - not intended for diagnosis



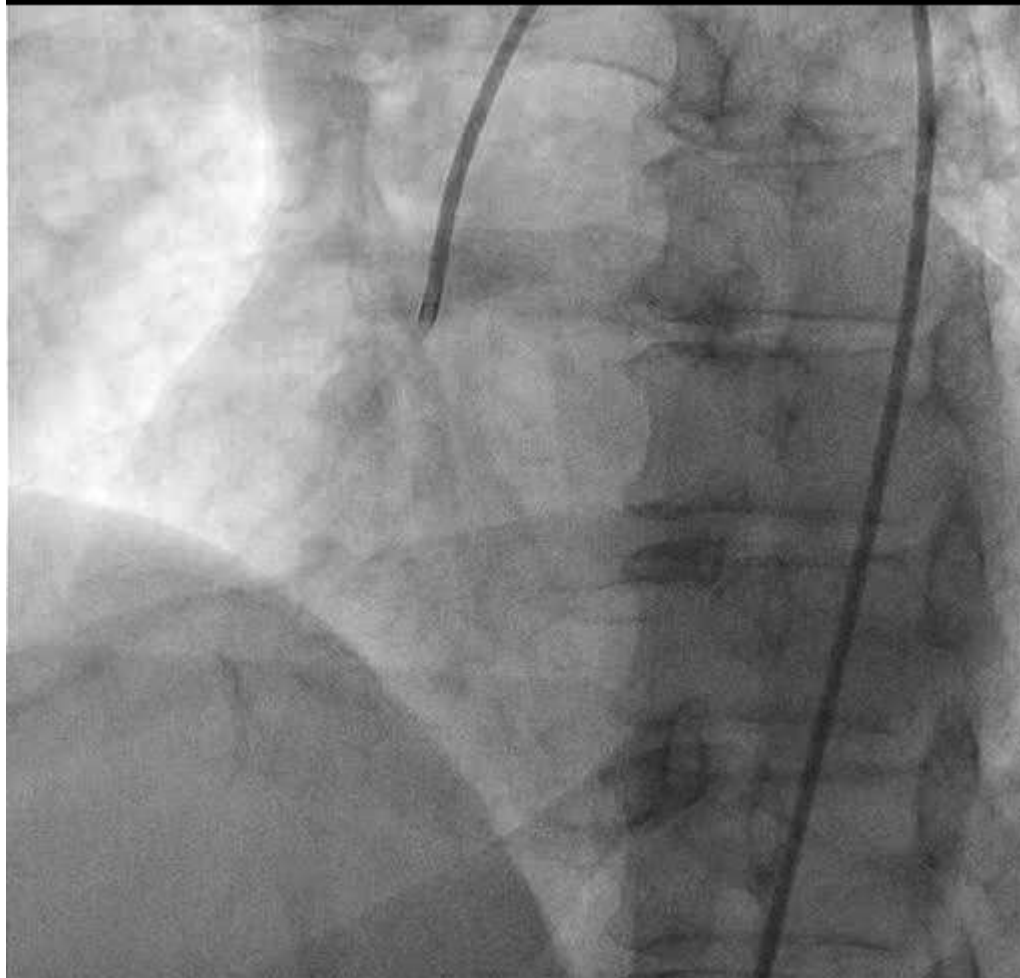
Lossy compression - not intended for diagnosis



Case 2

- Stable angina
- Diagnostic cath at C-PORT (without SOS) community hospital
- PCI recommended at academic medical center with SOS

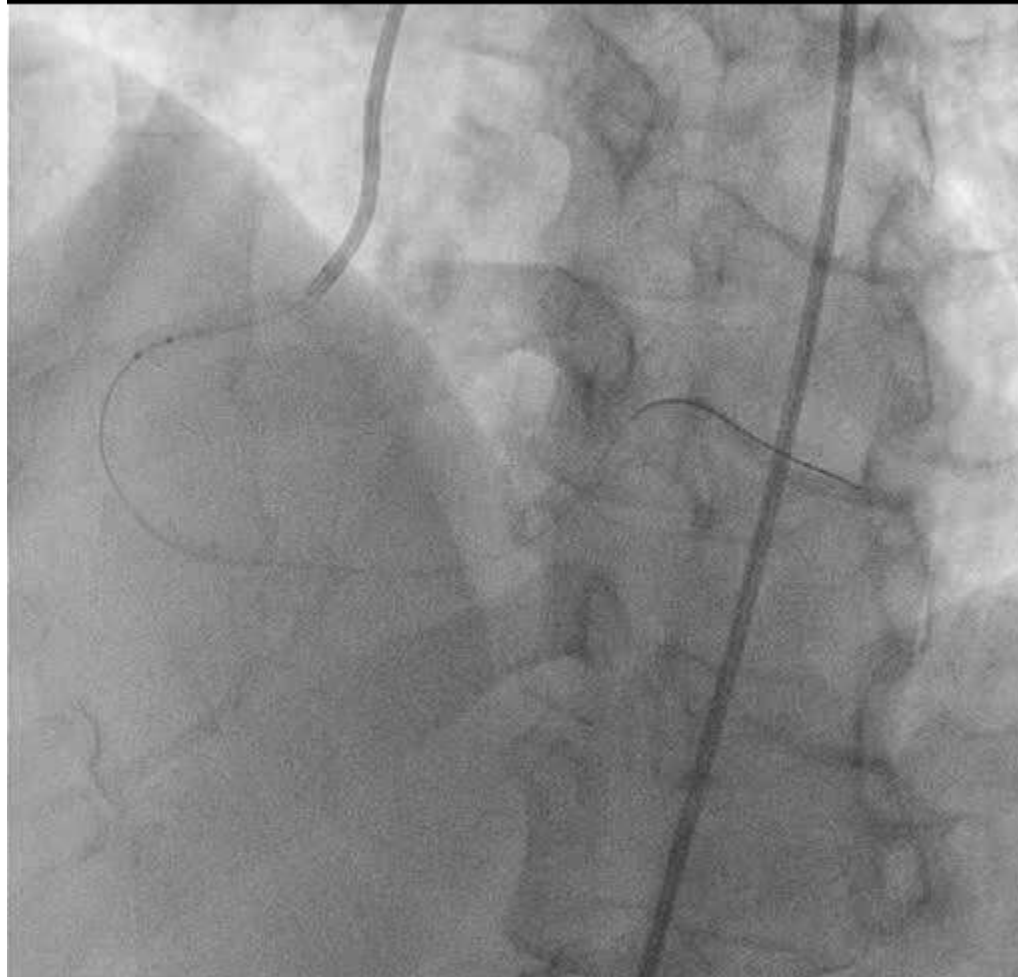
Lossy compression - not intended for diagnosis



Lossy compression - not intended for diagnosis



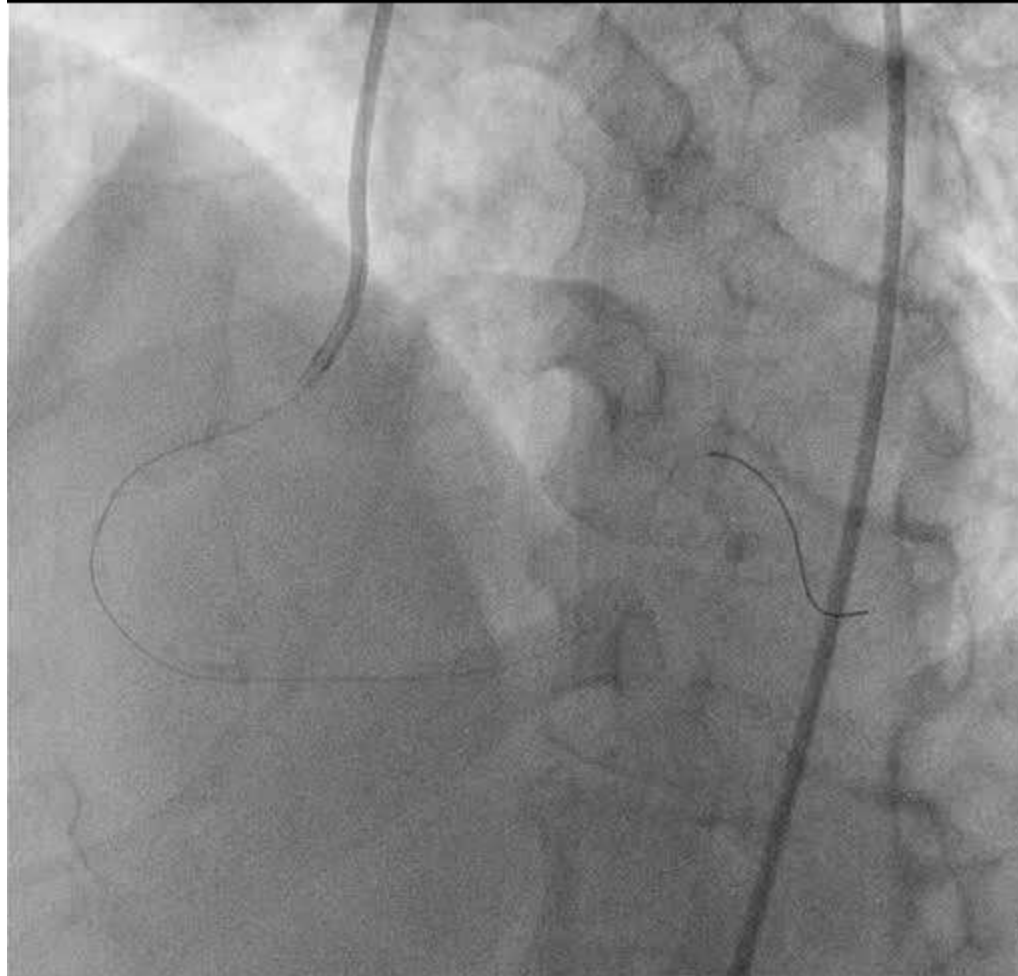
Lossy compression - not intended for diagnosis



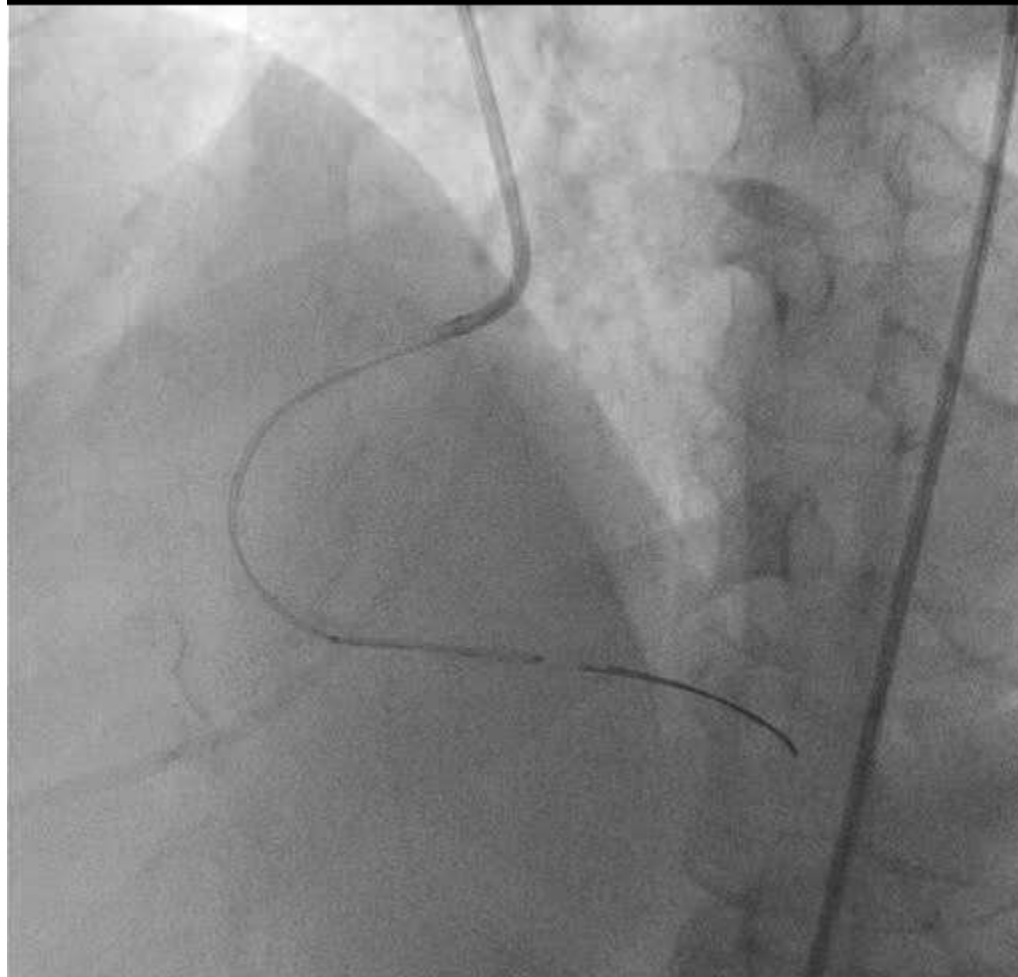
Lossy compression - not intended for diagnosis



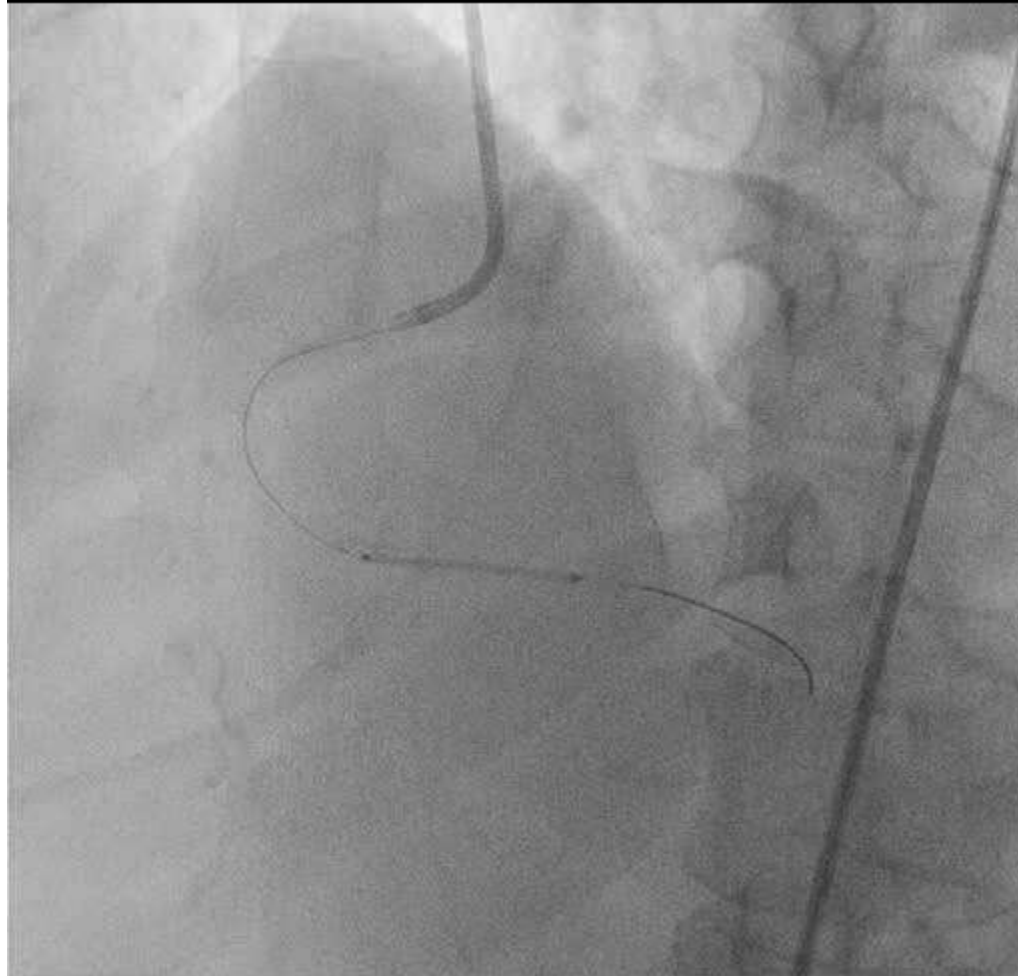
Lossy compression - not intended for diagnosis



Lossy compression - not intended for diagnosis



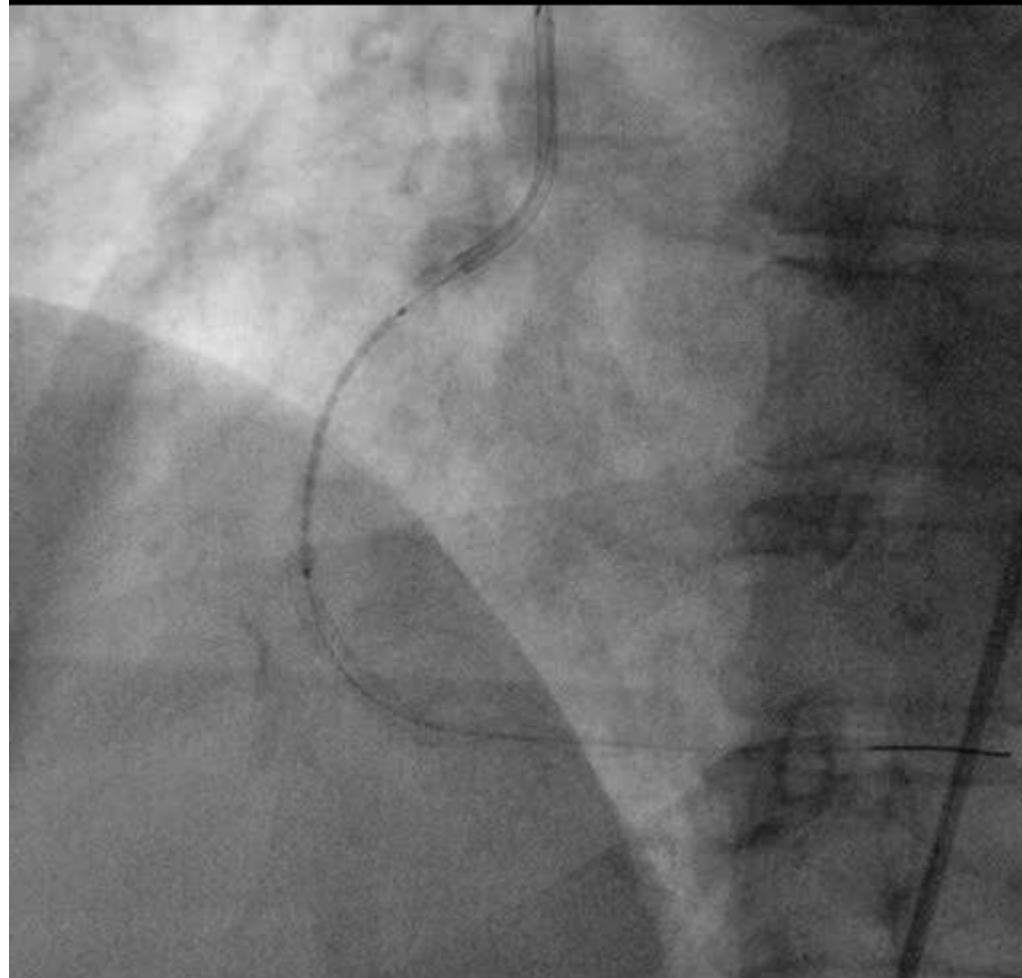
Lossy compression - not intended for diagnosis



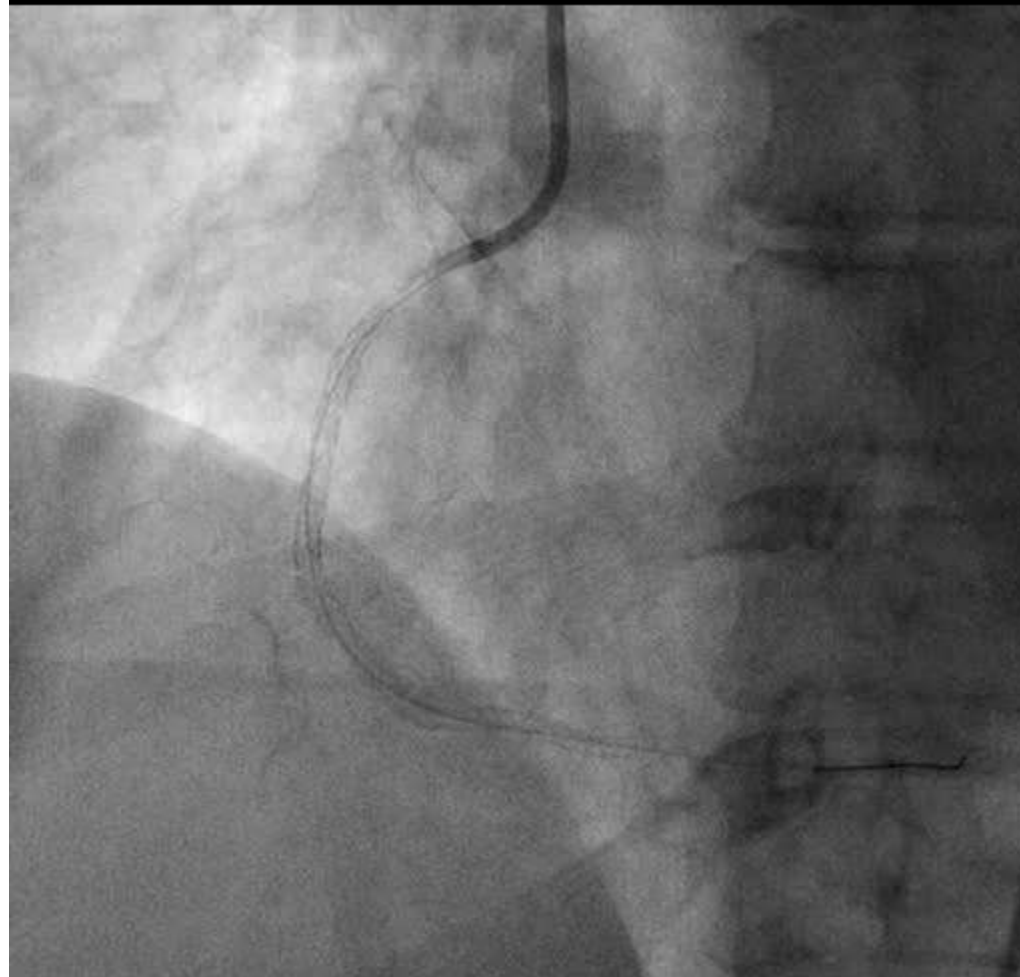
Lossy compression - not intended for diagnosis



Lossy compression - not intended for diagnosis



Lossy compression - not intended for diagnosis



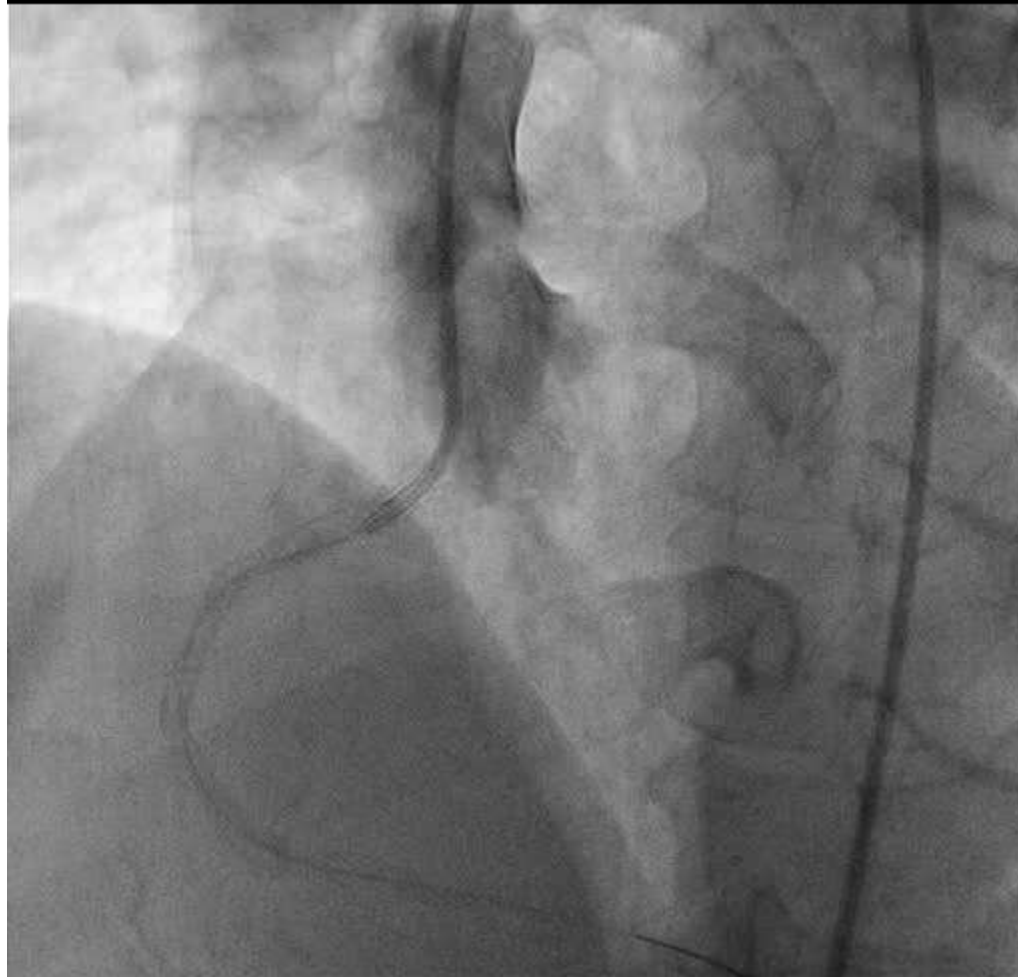
Lossy compression - not intended for diagnosis



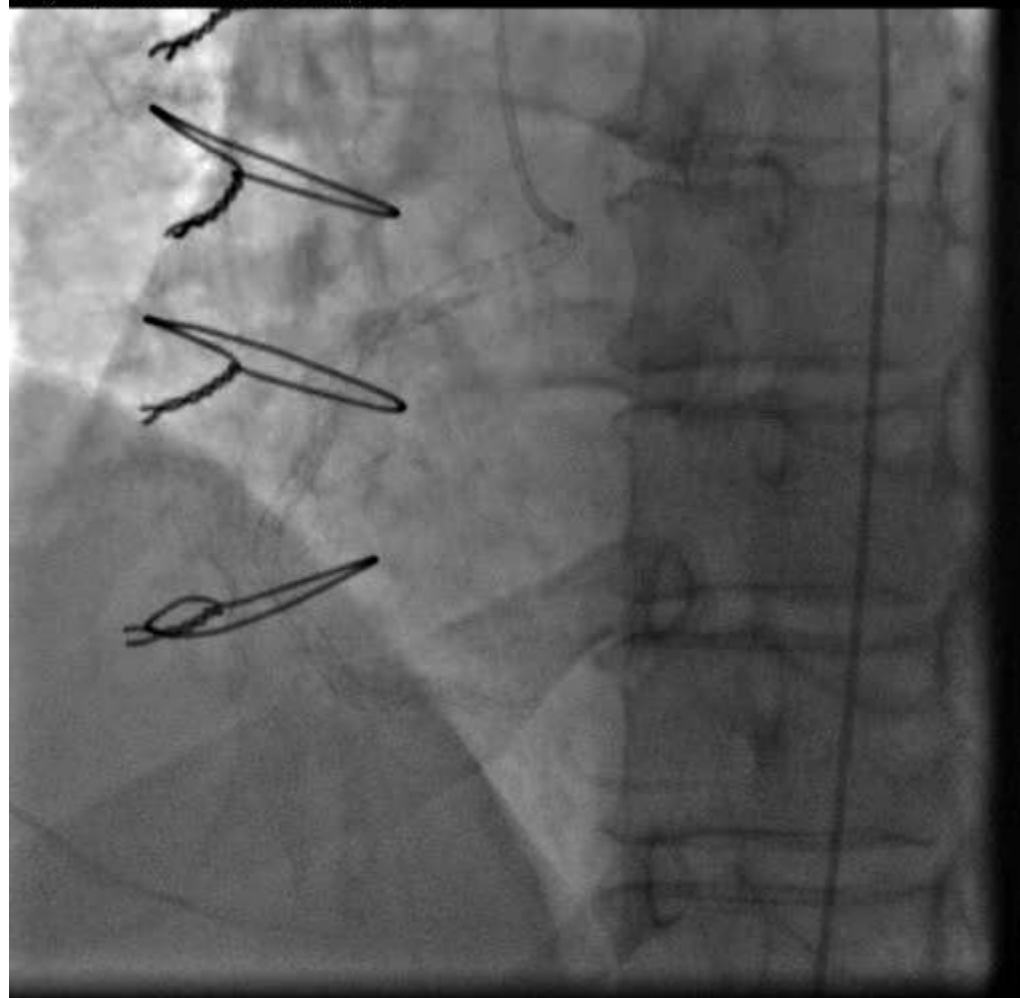
Lossy compression - not intended for diagnosis



Lossy compression - not intended for diagnosis



Lossy compression - not intended for diagnosis



Lessons

- Stay calm.
- Do not lose distal wire position.
- Do not forget about the guide.
- Do not inject without direct visualization of guide arterial pressure waveform.
- Cardiac Surgery back-up still nice to have!

