

The Power of Being Present

Heval Mohamed Kelli, MD



Disclosures

None

Outline:

Meaningful Diversity

Being Underserved

Power of Being Present

Meaningful Diversity:

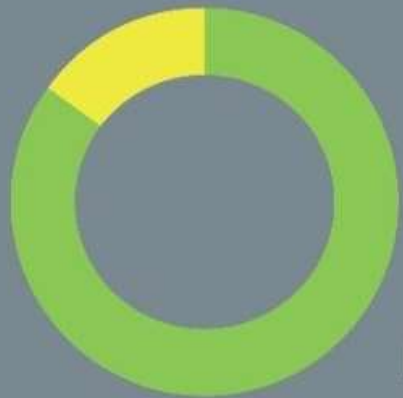
Focusing on the underserved &
under-represented

DEMOGRAPHICS

Black and Hispanic people make up more than

25%

of the United States population



Less than
15%
of the
physician
workforce is
Black or Hispanic

GROWTH



By 2060, racial and ethnic minorities are projected to account for more than half of the United States population

- U.S. Census Bureau



Robert Wood Johnson Foundation

IMPACT

These physicians are the key providers for...



70% of non-English speaking patients



54% of patients from Black, Hispanic, Asian, or other groups

And they are...



1.5 to 2 times
as likely to care
for low-income
patients



2 to 4 times
more likely to
treat patients on
Medicaid





3% to 6%

The proportion of FACCs who are African American or Hispanic, respectively, as estimated from the ACC 2016 Professional Life Survey.

Source: ACC Statistics.

25%



The proportion of ACC women members who attend ACC's Annual Scientific Session, compared with 20 percent of the overall membership, showing the high level of ACC member engagement of women. At 10 percent, the participation in the Women in Cardiology Section is one of the highest of the ACC sections.

Source: ACC Statistics.

5.4%



The percentage of cardiology trainees in the 2015-2016 training year who were African American. Only 6.8 percent were Hispanic. In internal medicine, these numbers were 5.8 percent and 7.8 percent, respectively.

Source: Accreditation Council for Graduate Medical Education.

\$1 Million



The lower lifetime earnings of women who are cardiologists than men, after correcting for productivity and job description.

Source: Jagsi R, Biza C, Probst A, et al. *J Am Coll Cardiol*. 2015;55:329-41.



DIVERSITY IN THE CARDIOVASCULAR WORKFORCE

<10%

The proportion of medical students who are African American. Less than 3 percent of medical school faculty are African American.

Source: Association of American Medical Colleges.



9.8%

The proportion of FACCs who are women and U.S. board certified in adult cardiovascular disease.

Source: ACC Statistics.



8%



The proportion of trainees in interventional cardiology and electrophysiology who are women, making these the two least diverse training programs in U.S. medicine.

Source: Association of American Medical Colleges.

♀ 65%

The proportion of women cardiologists who have experienced discrimination in the work place, vs. 23 percent of men. This proportion has not changed significantly in 20 years. Burnout is also higher in women cardiologists at 31 percent vs. 24 percent in men.

Source: Lewis SJ, Mehta LS, Douglas PS, et al. *J Am Coll Cardiol*. 2017;69:482-92.

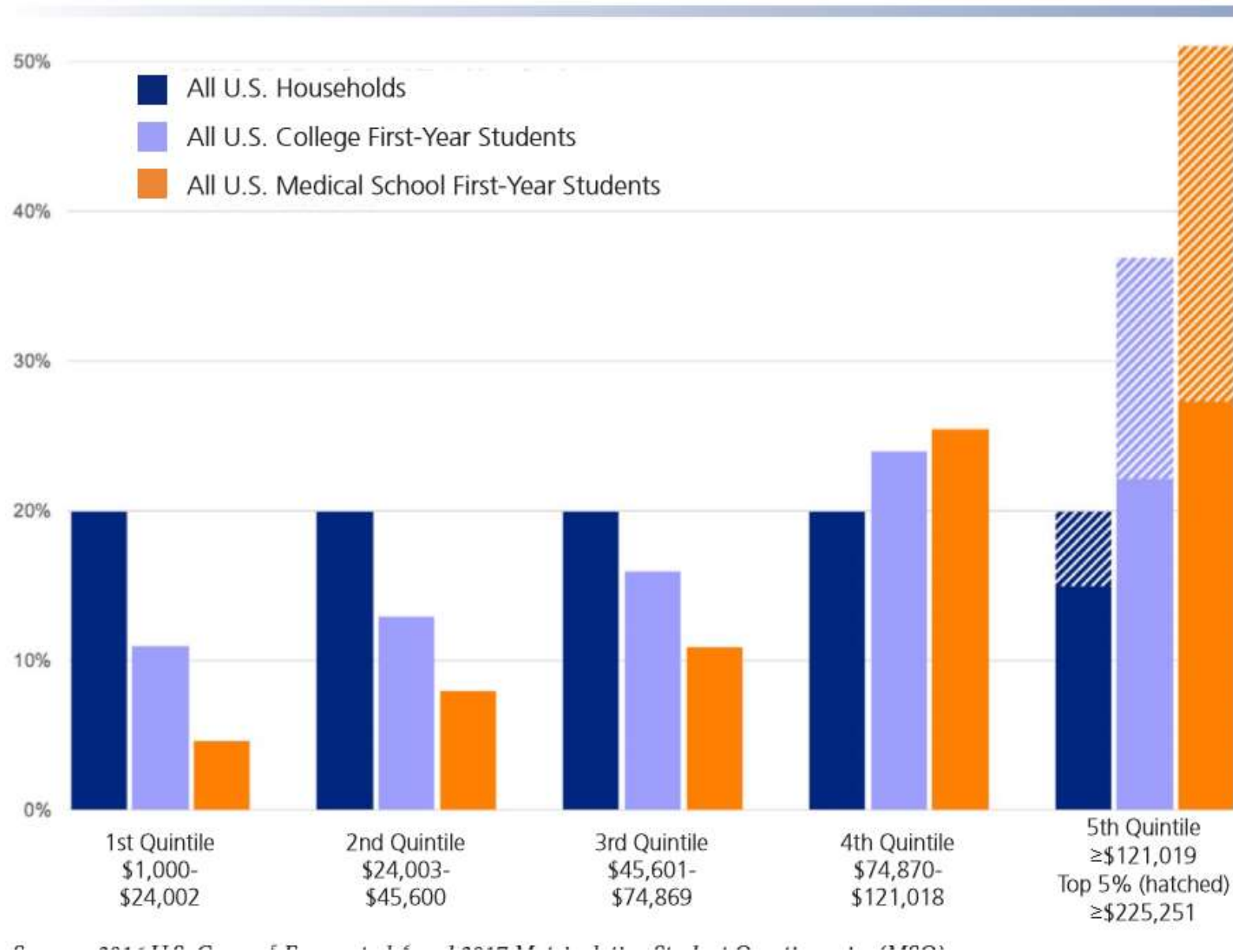
21%



The percentage of fellows in adult cardiology who are women. In comparison, about 50 percent of medical students and 46 percent of internal medicine residents are women. Cardiology is the third least diverse fellowship in U.S. medicine, after neurosurgery (17 percent) and orthopedics (14 percent).

Source: Association of American Medical Colleges.

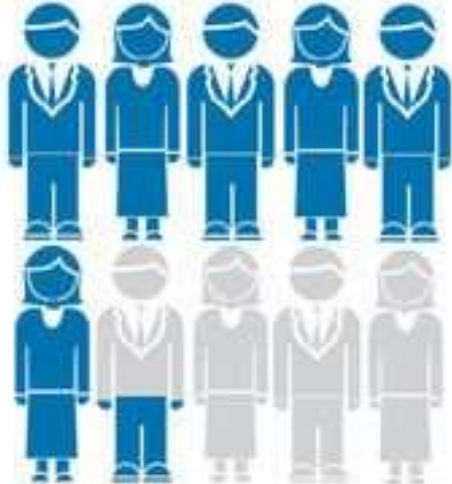
Figure 1. Parental income of first-year U.S. medical students by quintiles of U.S. household income, MSQ years 2007-17.



National low-income student education

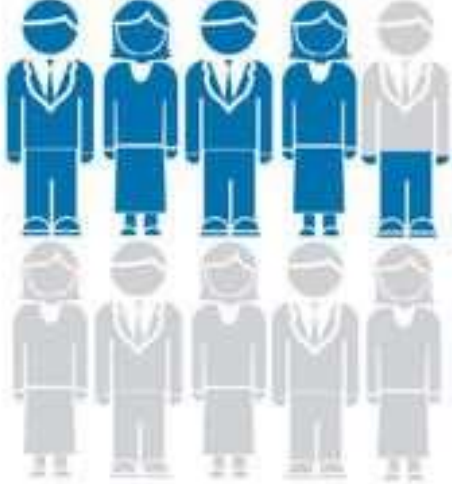
FOR EVERY 100 STUDENTS

65 will receive high school diplomas:

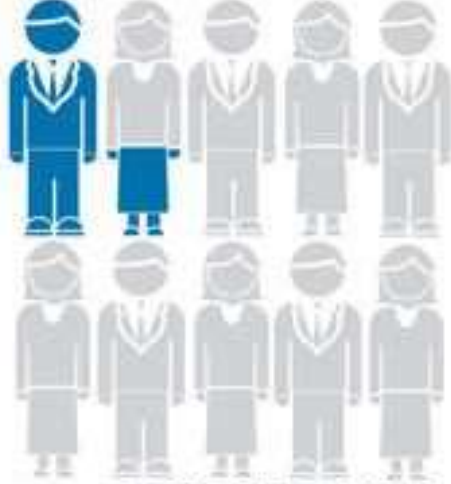


SOURCE: NATIONAL EDUCATION LONGITUDINAL STUDY

45 will enroll in college



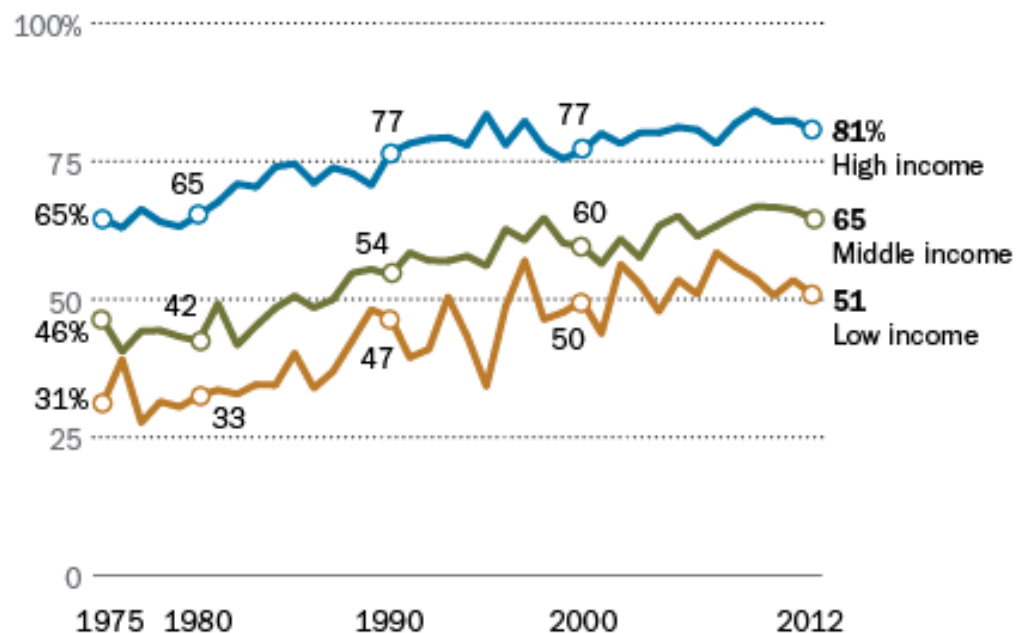
11 will complete postsecondary degree



DESERET NEWS GRAPHIC

Half of Low-Income High School Grads are Enrolled in College

Percent of high school completers by income level enrolled in a 2-or-4 year college



Note: "Low Income" refers to the bottom 20% of all family incomes; "high income" to the top 20% of all family incomes; "middle income" to the 60% between low and high incomes.

Source: National Center for Education Statistics, *2012 Digest of Educational Statistics*

PEW RESEARCH CENTER

Poverty & CVD

High Income
2.5% Reduction

Low income
1.6% Rise

20% higher risk

Gender

Race

SES

Location



Being Underserved:

Journey of refugees

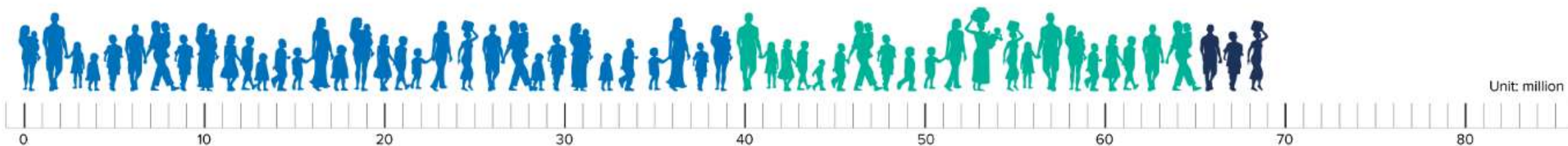
refugee

/rɛfjʊ'dʒiː/

noun

68.5 million

forcibly displaced people worldwide



Internally Displaced People
40 million

Refugees
25.4 million
19.9 million under UNHCR mandate
5.4 million Palestinian refugees registered by UNRWA

Asylum-seekers
3.1 million

57% of refugees worldwide came from three countries



South Sudan
2.4m



Afghanistan
2.6m



Syria
6.3m



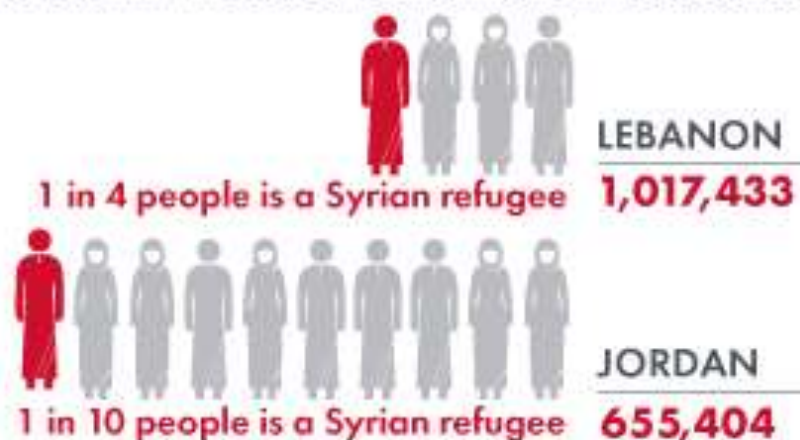


#10YearChallenge

SYRIAN REFUGEE CRISIS

Families Fleeing Violence

About **11 million Syrians** are on the run, including some 4.8 million who have been forced to seek safety in neighboring countries. Inside Syria, more than 6.3 million people are displaced and **13.5 million** are still in need of humanitarian assistance.



TURKEY **2,764,500**

SYRIA
6,325,978 million people
internally displaced

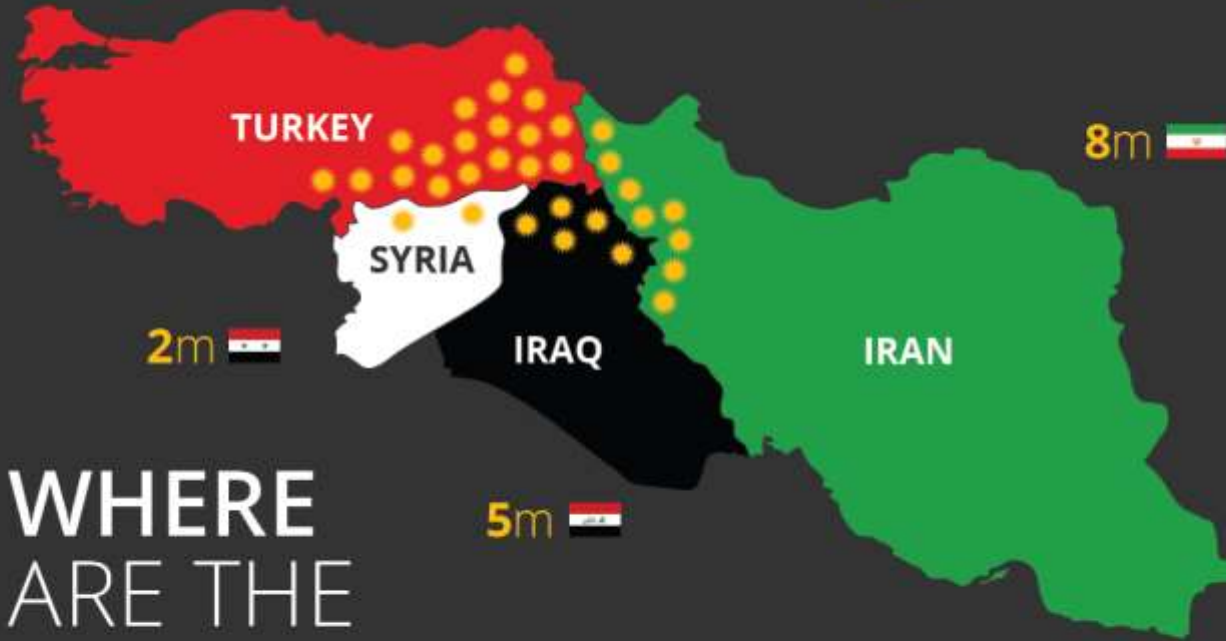
IRAQ
228,894

As of December 16, 2014
Sources: <http://data.unhcr.org/syrianrefugees/regional.php>
UNOCHA.org/syria



18m 

 2m REST OF THE WORLD



WHERE ARE THE KURDS?

KEY:  = 1 MILLION KURDISH PEOPLE
CIA World Fact Book, 2014

THE **KURDISH** PROJECT

Secret?
Formula?
Model?











TownMapsUSA.com

sign in become a supporter subscribe search jobs US edition

theguardian

US politics world opinion sports soccer tech arts lifestyle fashion business travel environment browse all sections

home > US

Georgia This small town in America's Deep South welcomes 1,500 refugees a year

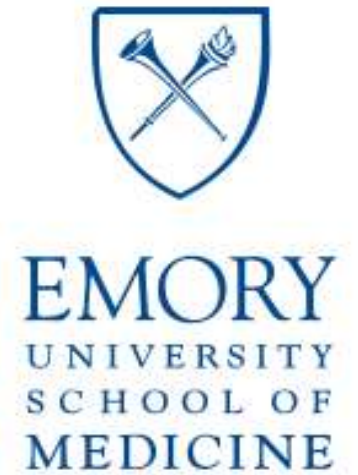
How does a dusty, working-class town in Georgia not only manage to rehome thousands of refugees, but make them integral to the town's sense of identity?







Mentor to Investor





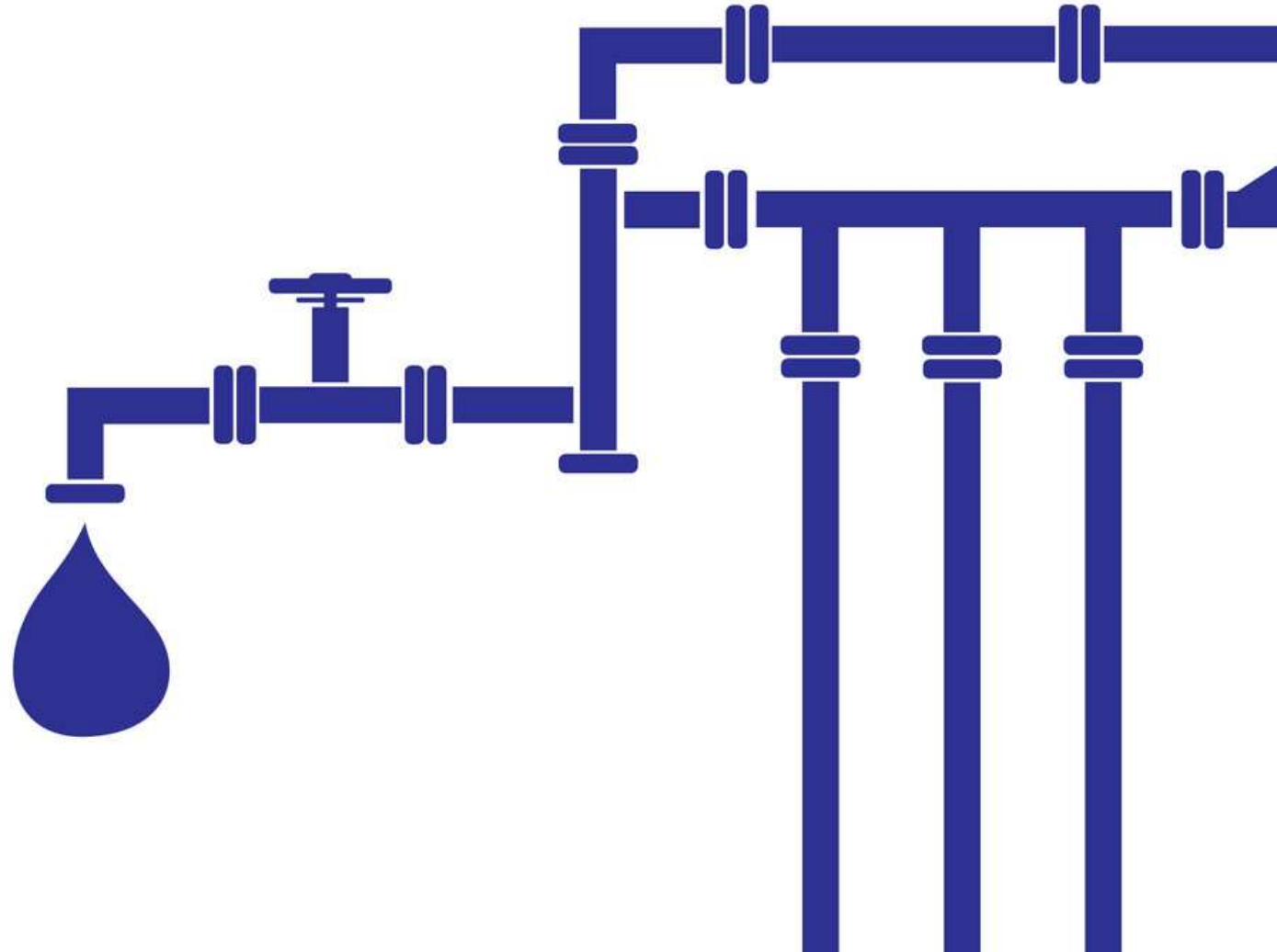
Your presence can
be the light of
guidance &
opportunities

Power of Being Present:

Inspire by being there

Medical Pipelines:

Underserved locations
Maximum capacity
Inspiring students







Mon 3/28, 11:13 PM

Mohamed Kelli, Heval



Reply all



LinkedIn MessageHeaderAnaly...

Dear , Dr.Kelli

I'm a student in Clarkston High School, and I saw your presentation and heard about your experience through your life career. I want to say that it motivated me a lot in many ways. I always wanted to be a cardiologist. The person you are right now is who I wanted to be in the next few years. I would like to introduce a little more about me first and I would like your advice. I live with my dad who suffered from heart, and kidney failure, my mom who has diabetes and 2 sisters and one younger brother that is still in high school. Since my parents are both suffering from diseases, they couldn't work. Me and my 2 sisters work part time after school and on the weekends. It's our senior year for me and my 2 sisters. We work in different places. I work in a little store in my neighborhood that allow me to work straight after school, and weekends. So, when you tell me about your story, I feel like you're telling my story. Sorry for writing too long. I want your advice on what kind of school and what type of education do I have to learn to become just like you... Thank you so much for reading my letter. I hope you share your advice as soon as possible. Thank You.

From,

ATLANTA MEDICAL STUDENT BRINGS HEALTHCARE AND MEDICAL EDUCATION TO REFUGEES

DAILY POINT OF LIGHT # 6442 | JAN 28, 2019 | BY [BRENDA SOLIS](#)



Becoming a doctor and more specifically a surgeon was something Hannah Williams wanted to do since high school. The human anatomy fascinated her ever since a young age so pursuing a career in medicine only seemed natural. So when she entered college, she started working at a research lab with surgeons and fell in love. She was reassured that this career was for her. Hannah, now, is in her last year of medical school at Emory University.



Mission



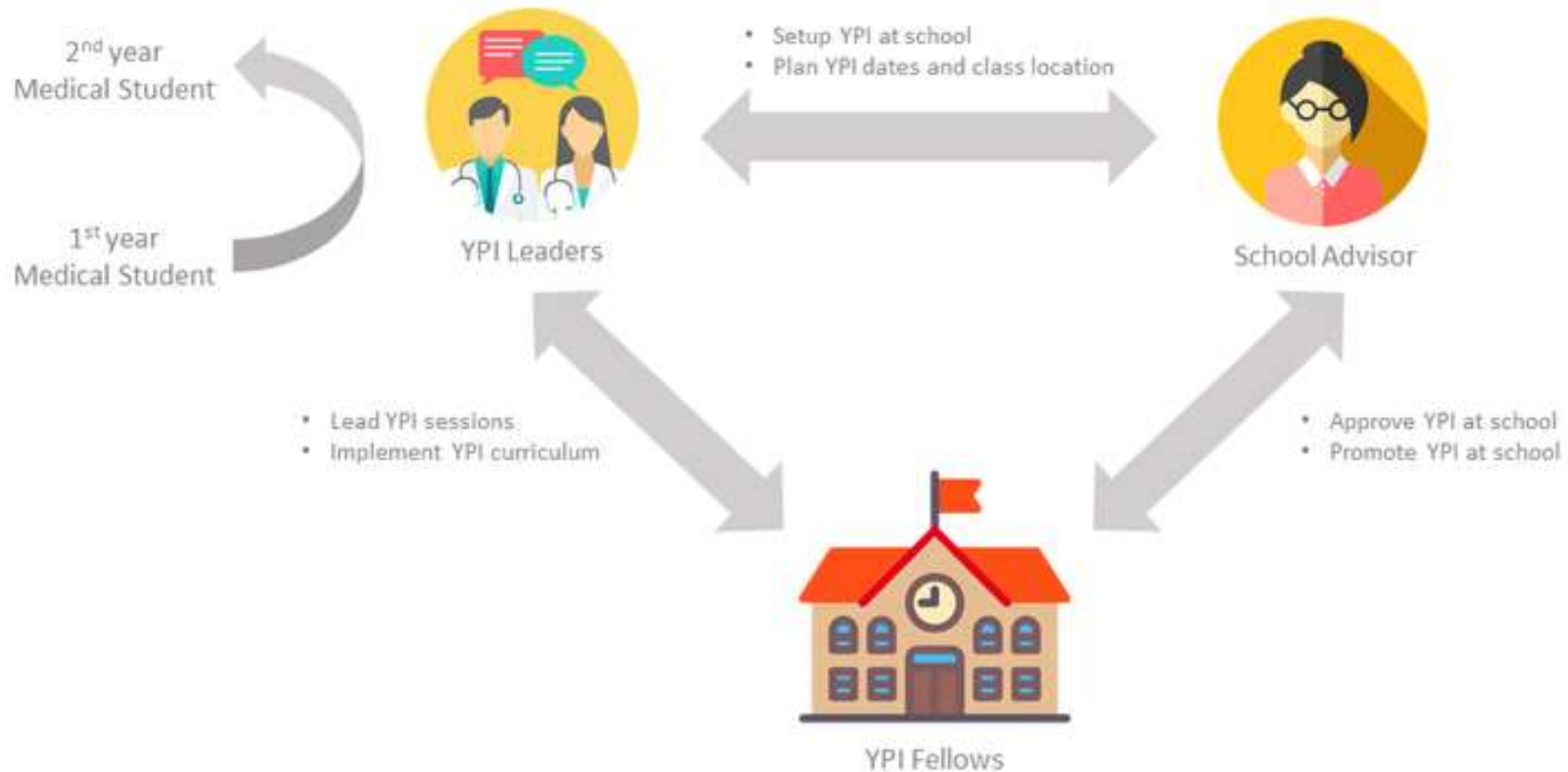
The **Young Physicians Initiative** will provide a **positive and engaging mentorship experience** to prepare high school and college students in their journey toward becoming a doctor in the future.

Our Power

- Medical Students
- Sustainable System
- Growing Network of Guidance
- **“Being Present”**



Our Method



Our Method

One session a month
Fall & Spring semesters

Sessions:

- Medical case
- ER cases
- Medical school journey
- Speaker & Panel

100% Volunteers



Our Impact

Founded in 2016

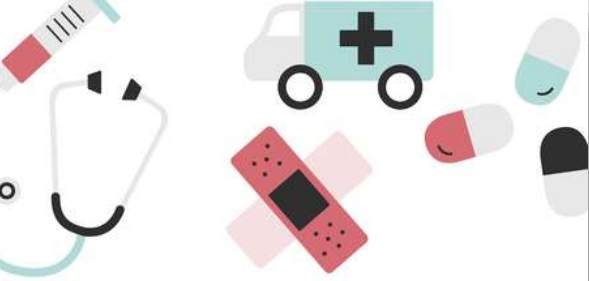
- 4 high schools
- 5 Universities
- 24 Medical students
- >100 high & college students a month
- Annual Doctor for a Day Conference
- 2-3 Doctor for a summits



Our Impact

- 82%** understand the process of becoming a doctor.
- 82%** became interested in becoming a doctor.
- 91%** knew the timeline of medical school.
- 100%** recommend the program to friends.
- 100%** are supported by their family to become a doctor.





YPI, GSU-CASA, GSU-CCE & UBEYOND PRESENT:

DOCTOR FOR A DAY

COME AND ENJOY:
PHYSICIAN PANELS
MEDICAL STUDENT MENTORSHIP
INTERACTIVE CLINICAL CASES

APRIL 7, 2019

8:30-12:00

NETWORKING LUNCH PROVIDED

5 INDIAN CREEK DR, STONE MOUNTAIN, GA 30083

Register at
www.ypiprogram.com/D4AD

YPI, Ubeyond, GSU Center for Community Engagement
GSU Center for the Advancement of Students and Alumni

#D4AD

Doctor for a Day conference

75 high school and college level students

>70% female

>60% underrepresented minorities

40 medical students and doctors representing all GA medical schools.





Doctor for a Day summit

16 rising college level students

>60% female

>90% underrepresented minorities

>90% were **inspired** into a career in medicine after attending the summit and also found the summit to be very helpful on guidance toward a medical career.





Our Focus on **Diversity**
and **Inclusion**



THE **ROSSE** FOUNDATION, INC.

UBEY  **ND**



www.YPIprogram.com

www.ubeyond.org

Take Home Message

- Meaningful diversity serves & drives excellence
- Be present & be the light to inspire
- Believe in the power of your passion
- We love to bring YPI to your area

Hkelli@emory.edu

@hevalkelliMD